

# RIDGEWOOD CENTER

33650 6TH AVE S | FEDERAL WAY, WA

## FOR LEASE

3,590 SF AVAILABLE



THE ANDOVER  
COMPANY, INC.

CORFAC INTERNATIONAL

**SHANE MAHVI, SIOR**  
(206) 336-5338  
smahvi@andoverco.com

**BRIAN BRUININKS, CCIM**  
(206) 336-5324  
bbruininks@andoverco.com



# PROPERTY HIGHLIGHTS



EXTERIOR 4/1,000 RSF PARKING RATIO



COVERED GARAGE 1/1,000 RSF PARKING RATIO



CLOSE PROXIMITY TO THE COMMONS SHOPPING MALL & ST. FRANCIS HOSPITAL



LOCATED ON MAIN ARTERIAL; I-5 AND S/99



PROJECT AMENITIES INCLUDE CONFERENCE ROOM AND FITNESS CENTER



STORAGE AVAILABLE



INCOMING RENOVATIONS TO LOBBY AND COMMON AREAS



ELEVATOR AND STAIR ACCESS



LANDLORD CAN BUILDOUT SPACE PER TENANT'S SPEC AS NEEDED



AVAILABLE NOW

The information contained herein has been obtained from reliable sources, but is not guaranteed. A prospective buyer/tenant should verify each item relating to this property and all information contained herein.

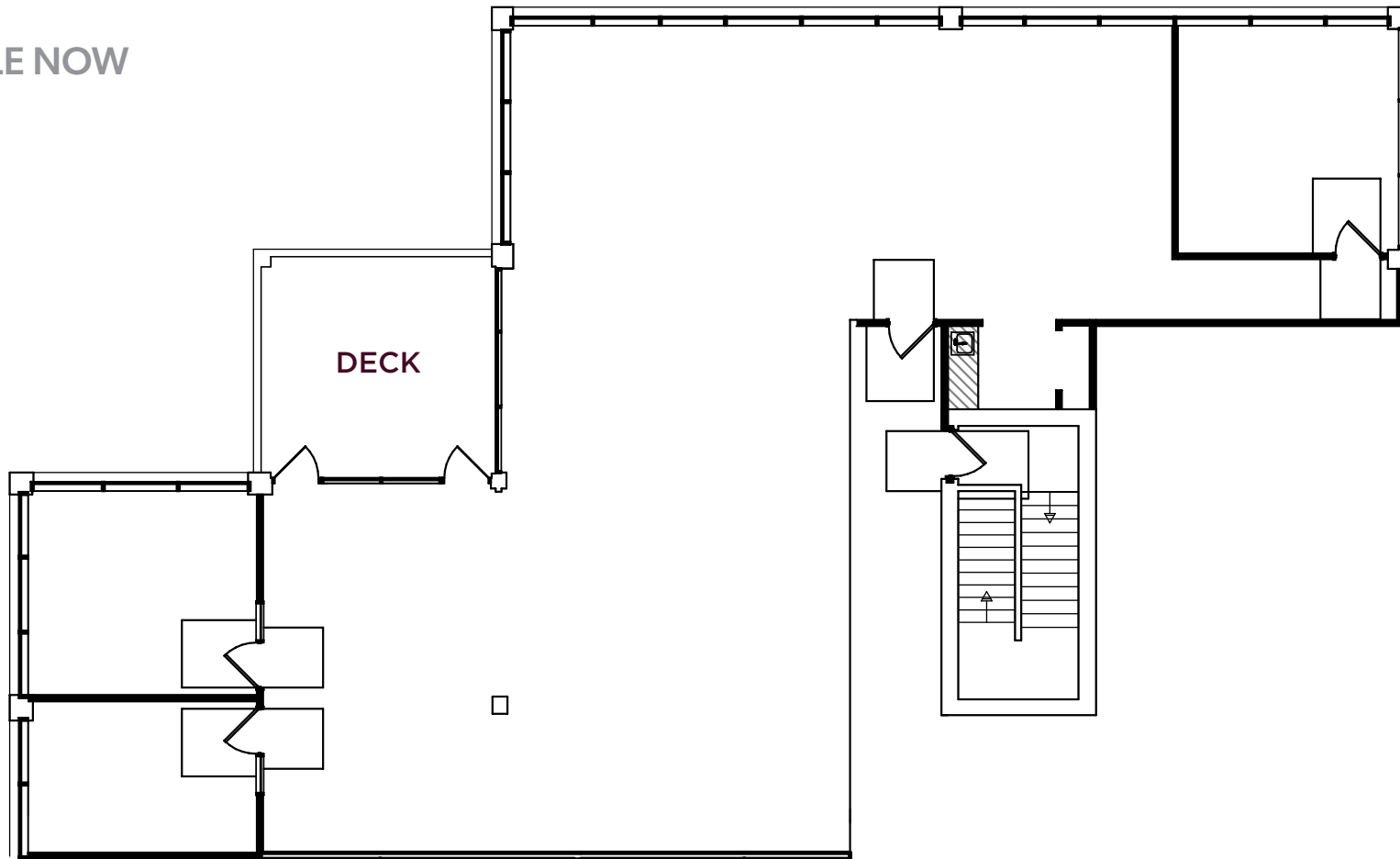


# SUITE 210

LANDLORD CAN BUILDOUT SPACE PER  
TENANT'S SPEC AS NEEDED

3,590 SF TOTAL

AVAILABLE NOW





# PROPERTY PHOTOS

