



LEASE

Creekside Office Park

9633 LEVIN ROAD NW

Silverdale, WA 98383

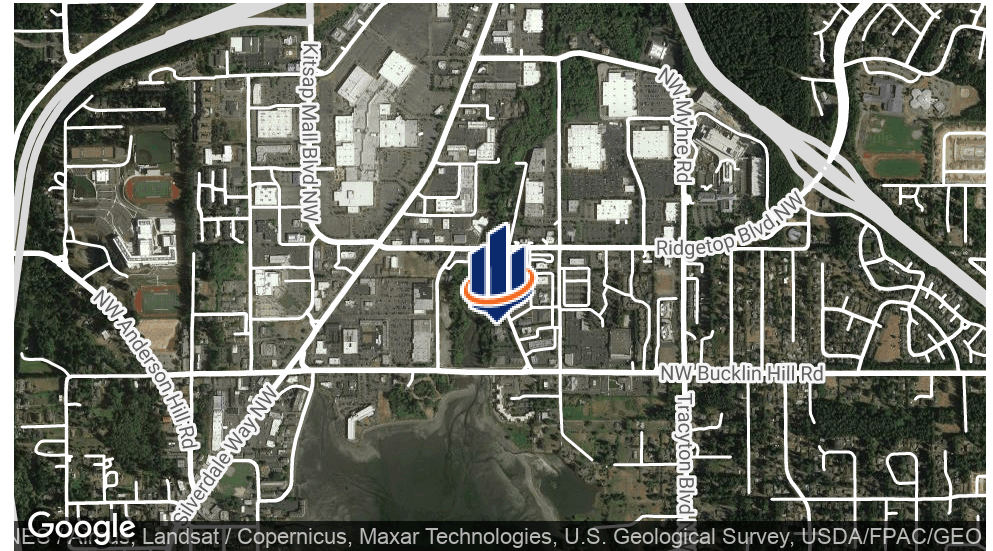
PRESENTED BY:

KEN DAVIS

O: 509.949.0860

ken.davis@svn.com

PROPERTY SUMMARY



OFFERING SUMMARY

LEASE RATE:	23.00
BUILDING SIZE:	22,571 SF
AVAILABLE SF:	948
LOT SIZE:	1.18 Acres
YEAR BUILT:	1994
ZONING:	Regional Center (10-30 DU/Ac)
MARKET:	Silverdale

LOCATION OVERVIEW

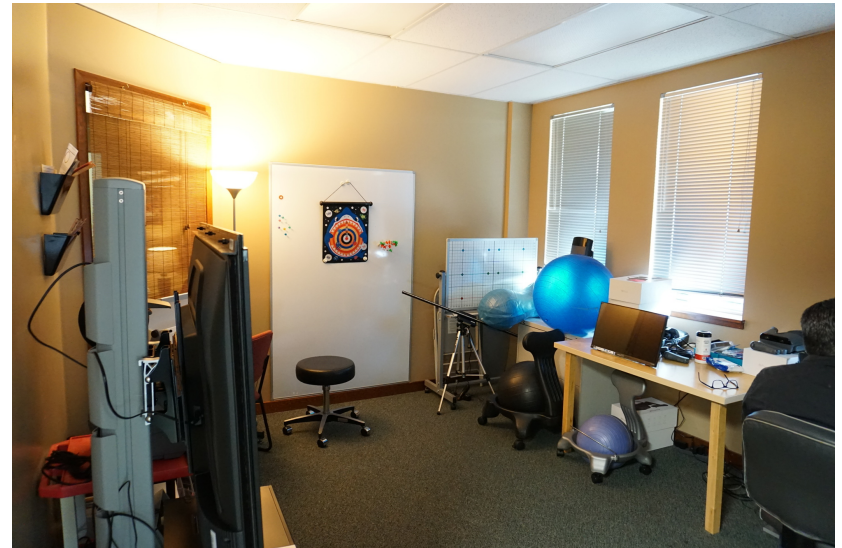
The Creekside Office Park is a very located professional center situated in the heart of Silverdale, WA. Ample off street parking, very well maintained grounds, and all services are located in the immediate vicinity. This professional center also boasts additional secured garage parking for tenants.

PROPERTY HIGHLIGHTS

- 948 SF
- 3 Private Offices
- Reception Area
- Kitchenette
- 1 Secured Garage Parking Space Included
- Excellent Area with all Services in Immediate Vicinity

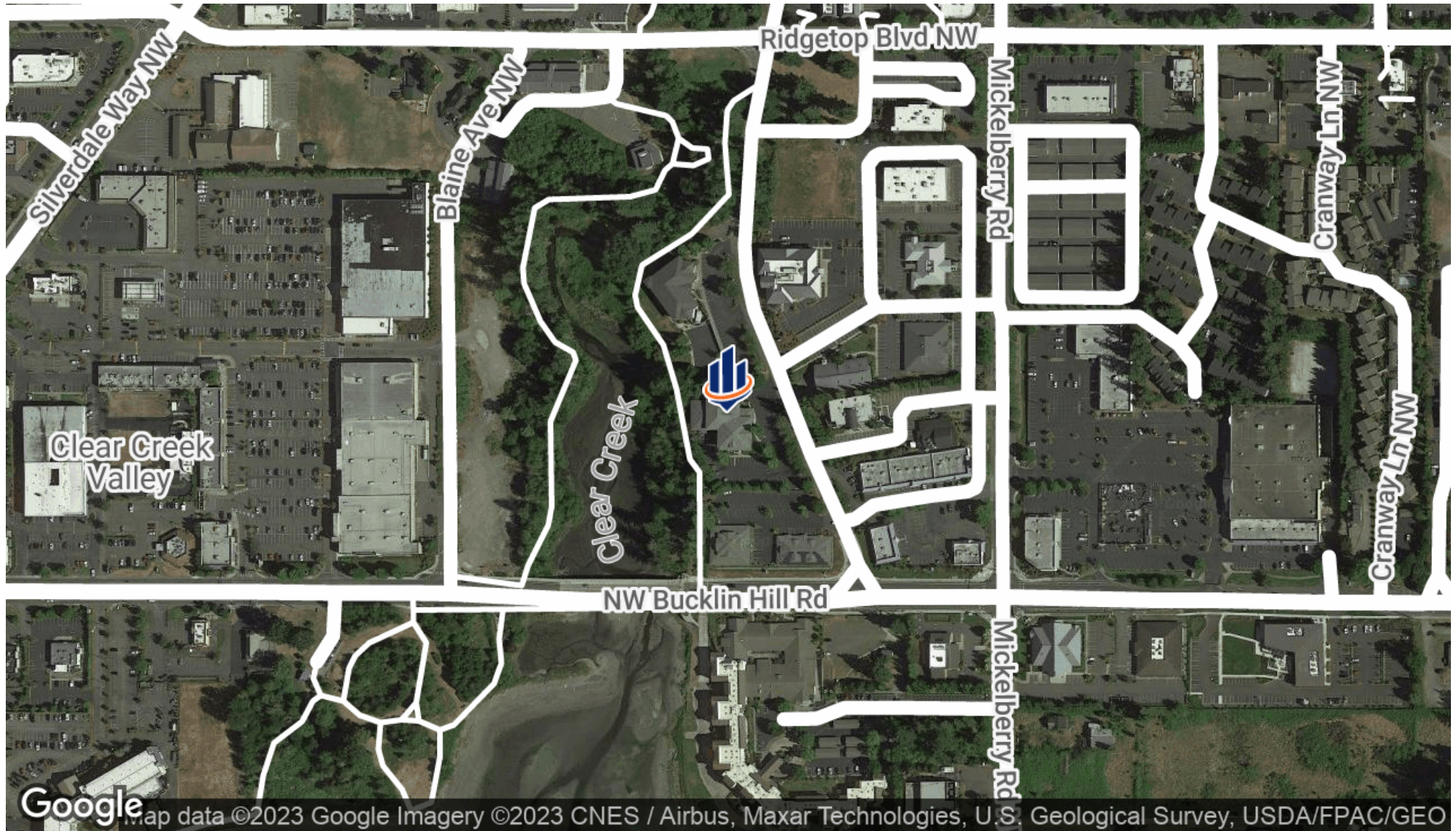
KEN DAVIS
O: 509.949.0860
ken.davis@svn.com

ADDITIONAL PHOTOS



KEN DAVIS
O: 509.949.0860
ken.davis@svn.com

LOCATION MAP



KEN DAVIS

O: 509.949.0860

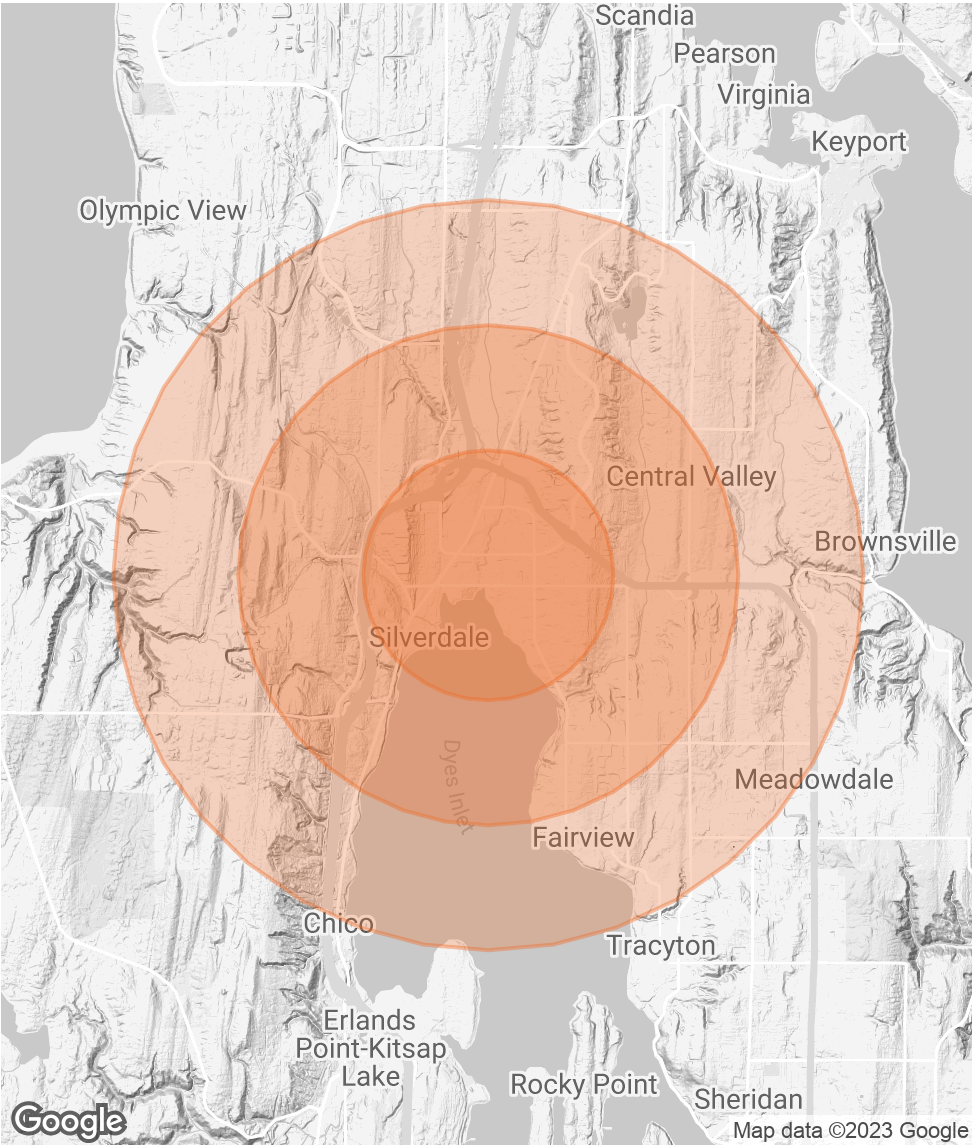
ken.davis@svn.com

DEMOGRAPHICS MAP & REPORT

POPULATION	1 MILE	2 MILES	3 MILES
TOTAL POPULATION	5,776	21,557	39,182
AVERAGE AGE	37.7	38.1	37.8
AVERAGE AGE (MALE)	33.8	35.6	36.1
AVERAGE AGE (FEMALE)	41.6	40.2	39.6

HOUSEHOLDS & INCOME	1 MILE	2 MILES	3 MILES
TOTAL HOUSEHOLDS	2,888	8,942	15,925
# OF PERSONS PER HH	2.0	2.4	2.5
AVERAGE HH INCOME	\$81,347	\$95,152	\$95,135
AVERAGE HOUSE VALUE	\$311,336	\$321,083	\$324,406

* Demographic data derived from 2020 ACS - US Census



KEN DAVIS
O: 509.949.0860
ken.davis@svn.com