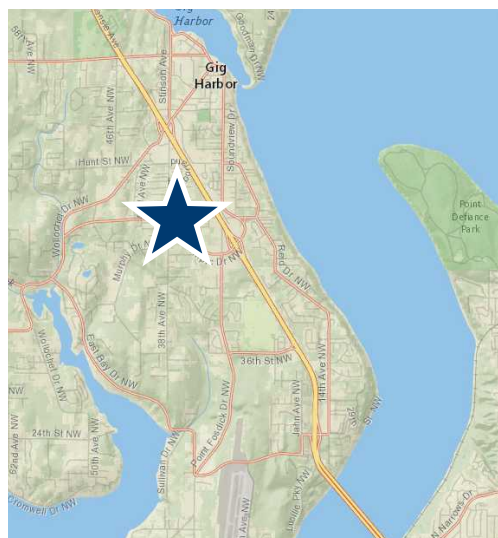


OLYMPIC SQUARE PROFESSIONAL CENTER 5201 OLYMPIC DRIVE, GIG HARBOR



FEATURES

- Office and Medical Space available in desirable Olympic Square location
- Excellent visibility from Olympic Drive
- Attractive finishes and landscaping
- Conveniently located off HWY 16
- Exceptional traffic count over 70,000+ on HWY 16
- Opportunity for exterior building signage
- Close proximity to major retailers and restaurants
- Professionally Managed by Rush Properties



CONTACT

Karen Fairall

Director of Brokerage Services, Rush Properties Inc.

t 253.858.3636 | f 253.858.3188

www.therushcompanies.com

kfairall@therushcompanies.com

OLYMPIC SQUARE PROFESSIONAL CENTER 5201 OLYMPIC DRIVE, GIG HARBOR

Average Daily Traffic Counts:



Highway 16
73,000 CPD



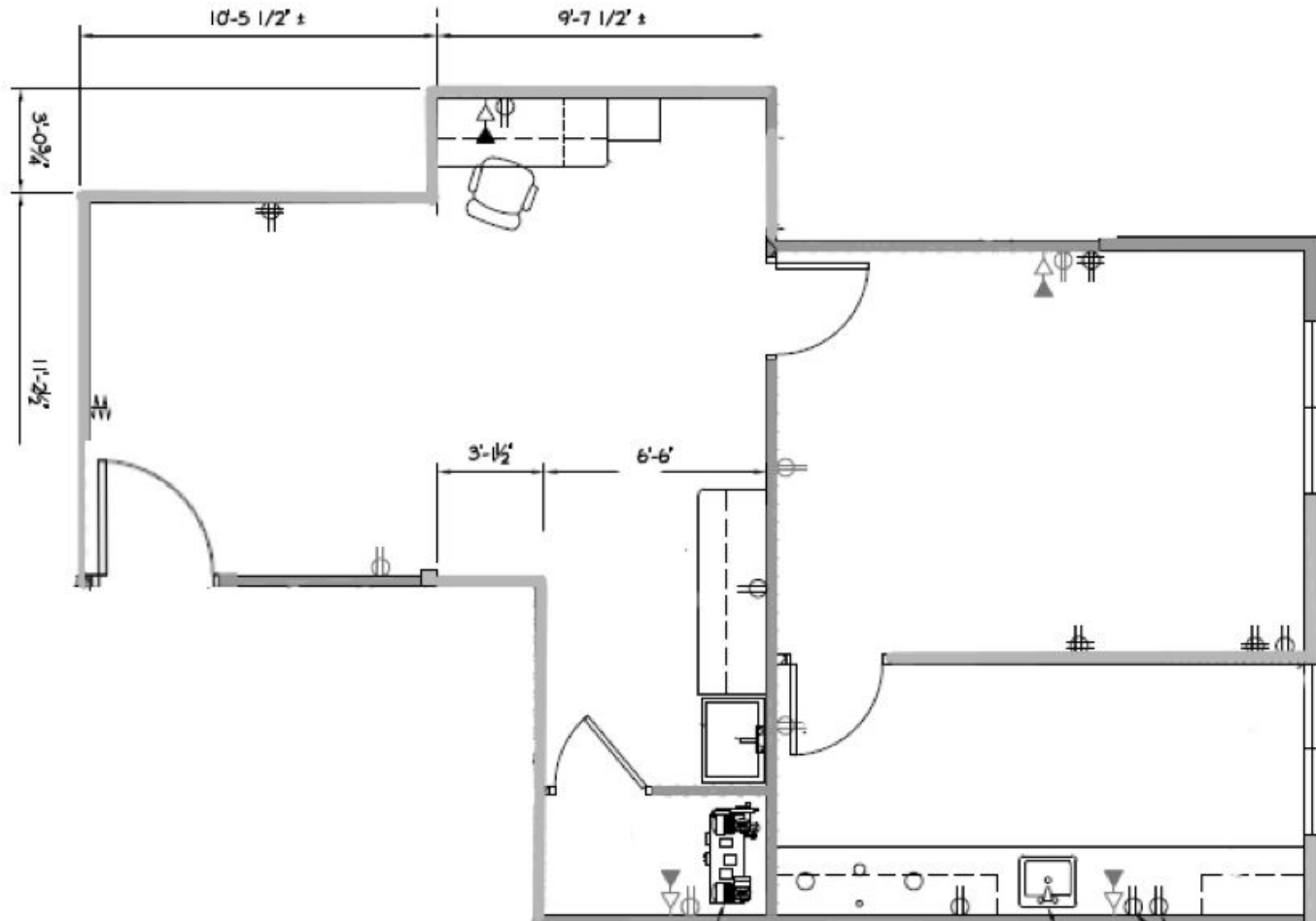
Olympic Drive
29,090 CPD

AREA DEMOGRAPHICS	1 Mile Radius	3 Mile Radius	5 Mile Radius
Estimated 2020 Population	6,380	25,609	89,111
Projected 2025 Population	6,711	26,735	93,616
Estimated 2020 Households	2,736	27,190	95,145
Median Household Income	\$82,604	\$103,138	\$92,218
Average Household Income	\$114,187	\$136,036	\$126,762
Projected Average Household Income 2025	\$125,452	\$151,437	\$140,766

Source: ESRI



OLYMPIC SQUARE PROFESSIONAL CENTER 5201 OLYMPIC DRIVE, GIG HARBOR



Suite 150 - 904 Rentable Square Feet